



WWW.ELEGANT-TRAINING.AE

MicroStation



For whom is the course for?

- This course is suitable for Students, Hobbyists Professional Architects, Engineers
- Industrial Designers, Builders and Landscape Architects

Certificates that you will get

- Training completion certificate by ELEGANT
- KHDA/Dubai Govt attested certificate (Fees Applicable)
- Auto Desk (Fees Applicable)

Pre-requisites

Basic understanding of CAD is enough to learn this course.





About MICROSTATION

This course is guaranteed to put students on the fast track to mastering MICROSTATION! Cleverly engineered project and lab exercises harness the power of Connect Edition functionality, guiding students to increased productivity. This course features expanded discussion of element modification, reference usage and manipulation, new Internet utilities, plus leading-edge 3D design and rendering techniques. Detailed instructions for seamless access to compatible file formats, dimensioning styles, and sophisticated system-level data are also included, making this the ultimate course for students at all levels.

Why you should learn Microstation

This course is designed to help you grasp ideas in Microstation for creating, editing, and printing 2D & 3D production drawings.



Contents



- Microstation Training Syllabus
- Getting Started With Micro station
- Startup And Interface Screen
- Mice, Tools, And Elements
- Selecting Elements
- Snaps, Tentative Points, And AccuSnap
- Design Plane, Working Units, And Dimension Input
- AccuDraw
- Absolute Coordinates And Grids
- Polygons Arcs And Ellipses
- Smartline
- Element Symbology
- Advanced Element Selection
- The Manipulate Tool Box
- The Modify Tool Box
- Measuring Elements
- Annotation
- Dimensioning
- Plotting And Printing
- Schedule in details
- MicroStation Concepts
- MicroStation Manager Dialog Box
- Mouse Buttons



- Button Assignments
- Data Button
- Tentative Button
- ResetButton
- Menus
- Palettes
- UserInterfaceLayout
- Key-In Commands
- File Commands
- Creating a File
- Saving a File
- TheDesignPlane
- Element Attributes
- Coordinate Systems
- Rectangular Coordinates
- Polar Coordinates
- AccuDraw
- Grid
- Locks
- Snaps
- Work Spaces
- View Control
- Opening/Closing Views
- Con guring Views
- Zoom In/Out
- Relationships With Window Areas
- Pan



- Rotate
- Previous/Next
- Saving Views
- Element Placement
- Linear Elements
- Lines
- Smart Lines
- Auto Closure with Smart Lines
- Place Point or Stream Curve
- Points
- Shapes
- Circles
- Arcs
- Levels
- Numbers
- Names
- Groups
- Display
- Symbolology
- Element Manipulation
- Copy
- Moving
- Parallel
- Scale
- Rotate
- Array
- Delete
- Element Selector



- Change/Match Attributes
- Change Attributes
- Match Attributes
- Element Modification
- Modify
- Delete Partial
- Extend One Element
- Extend Two Element
- Extend To An Intersection
- Trim
- Add Vertex
- Insert Vertex
- Delete Vertex
- Fillet
- Chamfer
- Text
- Set-Up
- Placement
- Auto Increment
- Text Nodes
- Set-Up
- Placement
- Fitted Text
- Editing
- Grouping Elements
- Fence
- Selector
- Cells
- Cells
- Cell Placement/Usage
- Patterning

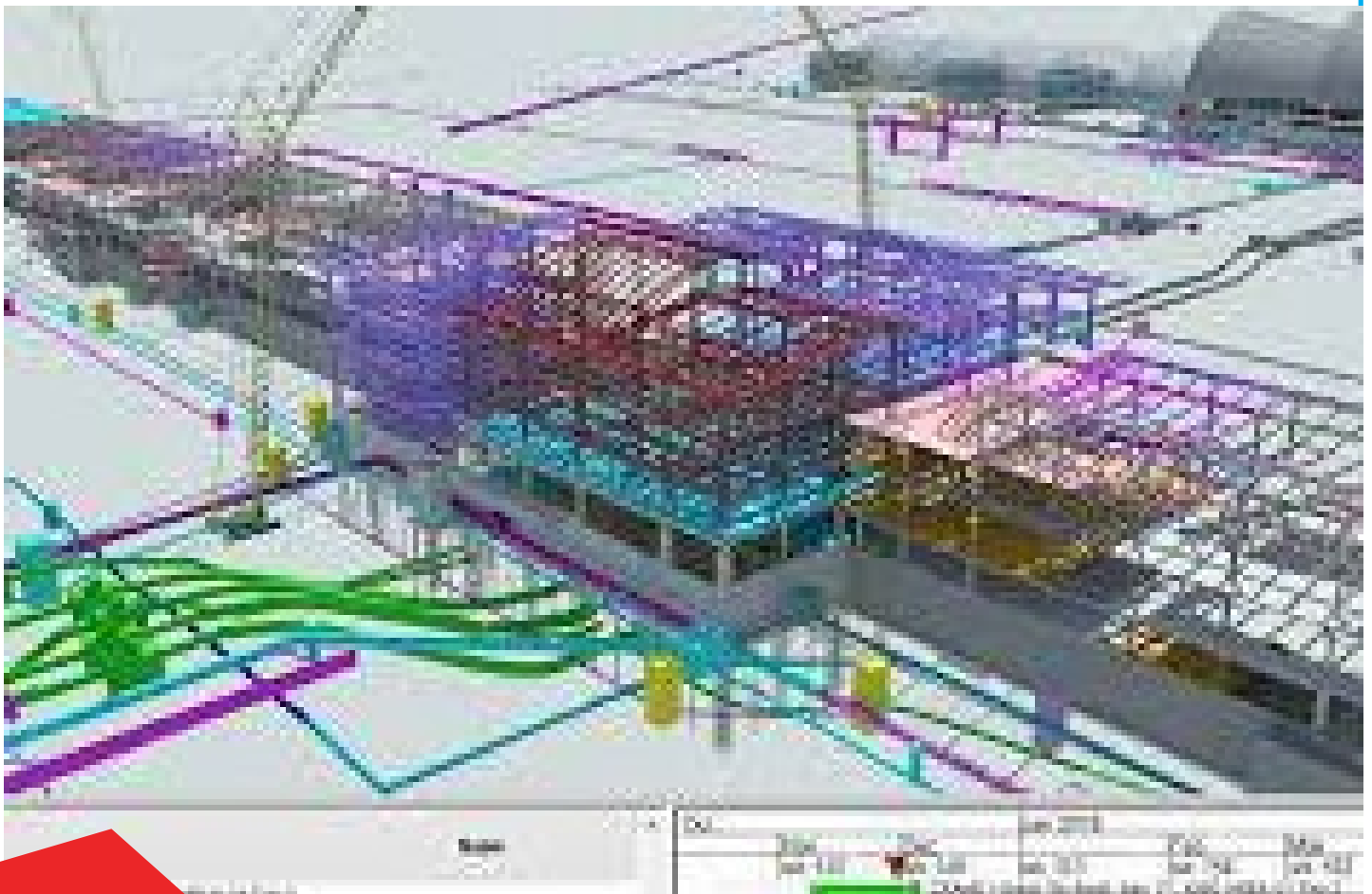


- Between Points
- Radius Angle
- Hatch Area
- Fence Area
- Cells
- Linear
- Measurement
- Length
- Area/Perimeter
- Dimensioning
- Set-Up
- Placement
- Associative Dimensions
- Changing Dimension Set-Ups
- Reference Files
- Reference Files Overview
- Attach
- Attach Design to Itself as a Reference
- Placing Cells
- Coordinate Systems
- Plotting Files





- Move
- Scale
- Mirror
- Clip Boundary
- Settings
- Tags
- Labels





CONTACT US

Office Number 620, AB Center,
Beside Ibis Hotel, Al Barsha 1 Near
Mashreq Metro Station, Sheikh Zayed
Road, Dubai, UAE

Phone : +971 4 399 7800

Mobile: +971 54 749 5664

Email: info@elegant-training.ae

Approved by KHDA

 **AUTODESK**
Authorized Training Center
Certification Center

 **idp** | **IELTS™**

ELEGANT  **TRAINING**



facebook.com/ElegantTrainingAE/



instagram.com/eleganttraining/



linkedin.com/in/eleganttrainingcenter/

WWW.ELEGANT-TRAINING.AE